



World Class Ski Trips for Leading Schools around the World

Switzerland



LES
ELFES
INTERNATIONAL

www.leselfes.com



Price package ski trip 2024/2025

7 nights / 8 days program from December 2024 until end of April 2025

In Verbier, La Tzoumaz and Crans-Montana, Switzerland

(min 20 people, Saturday to Saturday)

All-inclusive from **990 CHF***

High season price per person **1'820 CHF***

*** Contact us for more details**

Our Ski Trip Package includes:

- 7 nights accommodation in Swiss style chalet owned by Les Elfes
- Full board with 4 meals and drinks everyday (special diet possible)
- 2 – 4 bedrooms with ensuite bathrooms
- 6 days of 6 hours ski Lessons taught by professional instructors (all levels & 1:8 ratio)
- 6 days lift pass
- 6 days rental of ski/snowboard equipment with helmet (ski fitting on campus on arrival day)
- Fully supervised after-ski and evening activities (different each day)
- Ski test, ski competition, BBQ and prize giving
- Airport transfers (Geneva airport)
- Fulltime supervision by resort managers, activity managers, instructors, monitors (1:2 ratio)
- Taxes and services
- 1 free space for 10 paying students

Extras*:

• Insurance against accidents (Compulsory if you do not have your own insurance)	CHF	120.-
• Theft insurance against stolen skis	CHF	10.-
• Rental of ski clothes	CHF	108.-
• Equipment package (goggles, gloves, hoodies, socks and goblet)	CHF	150.-
• Cancellation insurance	CHF	60.-
• Halal Food option (per person and per week)	CHF	50.-
• Transfer to and from Zurich airport	CHF	50.-
• Excursion day	CHF	50/60.-



Prices

Verbier, La Tzoumaz and Crans-Montana

DATE	PRICE PER STUDENT IN SWISS FRANCS
DECEMBER	
30.11 – 07.12.24	1'050.-
07.12 – 14.12.24	1'260.-
14.12 – 21.12.24	1'365.-
21.12 – 28.12.24	1'470.-
JANUARY	
28.12 – 04.01.25	1'470.-
04.01 – 11.01.25	1'490.-
11.01 – 18.01.25	1'490.-
18.01 – 25.01.25	1'680.-
FEBRUARY	
25.01 – 01.02.25	1'820.-
01.02 – 08.02.25	1'820.-
08.02 – 15.02.25	1'820.-
15.02 – 22.02.25	1'680.-
MARCH	
22.02 – 01.03.25	1'680.-
01.03 – 08.03.25	1'470.-
08.03 – 15.03.25	1'470.-
15.03 – 22.03.25	1'470.-
22.03 – 29.03.25	1'470.-
APRIL	
29.03 – 05.04.25	1'680.-
05.04 – 12.04.25	1'680.-
12.04 – 19.04.25	1'470.-
19.04 – 26.04.25	990.-



Pre-booking form

Ski Trips for schools Winter 2024/25

Verbier, La Tzoumaz (Verbier North), Crans-Montana – Switzerland

Preferred Resort:	<input type="radio"/> Verbier <input type="radio"/> Crans-Montana <input type="radio"/> La Tzoumaz Campus <input type="radio"/> La Tzoumaz Poste <input type="radio"/> Niseko, Japan (Kindly express your interest, and we will send you information by the end of March)	
Name of school:		
Full address:		
Phone:		
E-mail:		
Name of responsible:		
Date preference 1: (if possible, Saturday to Saturday)		
Date preference 2: (if possible, Saturday to Saturday)		
Approx. number of students: (Same or less than previous year but minimum 20 paying students)	Girls:	Boys:
Free places for teachers: (1 for 10 students)		

Booking procedure

Bookings can be made at any time during the year, but the following dates can facilitate the process for you.

Until end of April

You will have the priority on other booking-requests if you fill out the above pre-booking form.

By the end of April/May

You will receive a quotation to be signed, in order for us to hold your places. We usually ask for a non-refundable deposit of CHF 3'000.– to be paid by the 30th of June.


By the 4th of October

You will receive the Proforma invoice as well as all the forms to be filled out. **A 30% deposit will have to be paid by October 4th, 2024.**

After these dates and in case of non-payment of the deposit, we will not guarantee your places and we will handle other bookings as first come first served.

Preparation Timeline and Checklist

BEFORE THE SUMMER BREAK:

- 
- Step 1** At the end of your current trip, or as early as possible for new schools, please fill in the pre-booking.
→ Link to the docs : <http://tiny.cc/LEIprebooking>
- Step 2** We will then send you a quote and our cancellation policy to be reviewed and signed within 3 weeks.
→ Link to supporting documents for the school's perusal: <http://tiny.cc/LEIdocuments>
- Step 3** Once the quote is validated and the school's management has approved the trip, we will send you all the marketing material for trip promotion and visa information.
→ We suggest you first send a parents' letter (including payment plan):
<http://tiny.cc/LEIletter>
→ You should then arrange two presentations, one for children and one for parents accordingly. We are happy to assist where needed.
Link to powerpoints, videos: <http://tiny.cc/LEIPPT>
- Step 4** As early as possible and at latest by mid-April, you have to update us on the viability of the trip and on the approximate number of students. We will then send you a deposit payment invoice of CHF 3000.– to be paid by end-June.
- This amount will be deductible from the final invoice in case the trip takes place and will not be refunded in case of cancellation of the ski trip. In case your school is not ready to pay the deposit of CHF 3000.–, we will not be able to guarantee the places for your ski trip and we will deal on a first come first serve basis.

AFTER THE SUMMER BREAK:

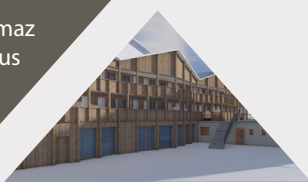
- Step 5** At the beginning of the school year, we suggest you do another parents' meeting to offer the trip to new students, remind parents of the 2nd instalment to be paid (we suggest 1st instalment to be paid prior to the summer break), and start filling up the following documents that we will need latest 1-month before your arrival:
- Please do not fill up the forms online but download/copy them and send/share them with us
- Info sheet and regulations: <http://tiny.cc/LEIregulations>
 - Your ski trip Google Form or Names/medical/options list: <http://tiny.cc/LEIform>
 - Consent form: <http://tiny.cc/LEIconsent>
 - Risk assessment: <http://tiny.cc/LEIrisk>
 - Choice of program: <http://tiny.cc/LEIprograms>
- Step 6** At the beginning of September, you will receive the proforma invoice with your updated students' count. We then require a first payment of 30% of the total amount by October 4th . Once received, we will be able to assist you with visa applications and provide invitation letters and insurance certificates.



Verbier



La Tzoumaz
Campus



La Tzoumaz
New campus



La Tzoumaz
La Poste



Crans-Montana



Niseko
Japan

Verbier

Campus:

- Space for 140 students
- Two Swiss-style chalets (male and female)
- 2-4 bedrooms, each with ensuite bathrooms
- All facilities for in-house activities

Resort:

- One of the world's most popular resorts
- "Les 4 Vallées", over 400km of ski slopes and summer trails
- Altitude: Up to 3.300 m

La Tzoumaz (Verbier North)

Campus:

- Space for 60 students
- 2-6 bedrooms with ensuite bathrooms
- Sole occupancy with minimum 40 students

New Campus:

- Space for 86 students
- 1-5 bedrooms with ensuite bathrooms

La Poste Campus:

- Space for 75 students
- 2-6 bedrooms with ensuite bathrooms

Resort:

- One of Switzerland's most popular resorts
- "Les 4 Vallées", over 400km of ski slopes and summer trails
- Altitude: Up to 3.300 m
- Traditional Swiss village with spectacular views

Crans-Montana

Campus:

- Space for 48 students
- 2-6 bedrooms with ensuite bathrooms
- Sole occupancy with minimum 30 students

Resort:

- Year round access to the glacier "Plaine Morte"
- Lively village with many top fashion boutiques

Niseko, Japan

Campus:

- Space for 80 students
- 2-4 bedrooms with ensuite bathrooms
- Activity center

Resort:

- Extensive ski slopes and picturesque alpine scenery
- Premier destination for winter sports enthusiasts